



Description *Direct Office Space*

Location: 10 Park Avenue - Murray Hill
Size: 1250 SF
Floor: 2nd Floor
Price: \$45.60 PSF
Term: Lease 3 - 5 Years
Electric: Direct
Possession: Immediate

Features

- ▶ Prestigious Park Ave Address:
- ✔ Well-Maintained Coop Building
- ▶ Move In-Ready Today
- ▶ Corner Space in Building:
- ✔ Good Exposure from Two Sides
- ▶ 3 Private Offices
- ▶ Reception Waiting Area
- ▶ Pantry Room
- ▶ Two Closets
- ▶ Polished Wood Floors throughout
- ▶ Private Bathroom (with Shower)
- ▶ 24 Hour Staffed Lobby (Conceirge in Lobby)
- ▶ 24 Hour Elevator Access
- ▶ On-site Management



For Further Information, Please Contact

Jonathan Anapol
Prime Manhattan Realty
212-268-8289 - direct
917-439-4225 - cell
janapol@pmrny.com
www.NewYorkOffices.com

10 Park Avenue situated in prime Murray Hill is a prewar building that resonates like a Vermeer painting. The lobby is rather grand and the mail desk/concierge translates to an old world feel. The building was designed by Helmlle, Corbett and Harrison, one of the finest architectural firms in the 1940s. It was originally a hotel.

Subways: 6 at 33rd St (under 500 feet)

B D F M N Q R at 34th St-Herald Square (0.4 miles)

PATH at 33rd Street Station (0.4 miles)

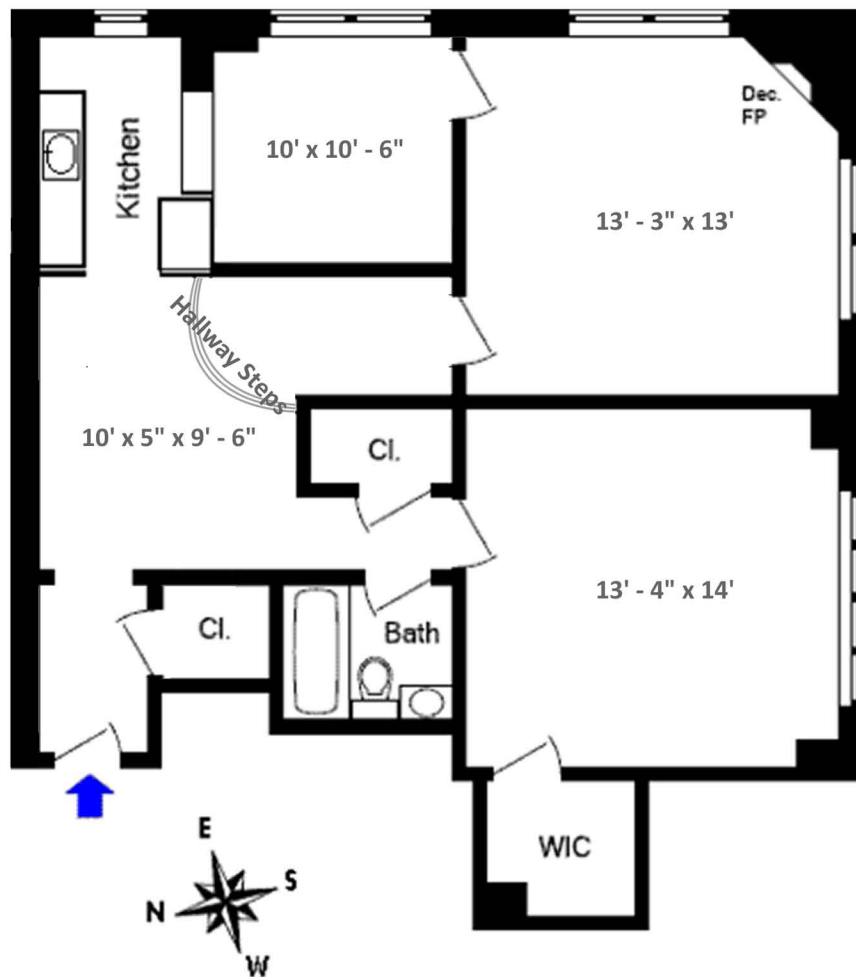
N R at 28th St (0.4 miles)

B D F M 7 at 5th Av (0.4 miles)



Description **Direct Office Space**

As Built Floorplan



For Further Information, Please Contact Exclusive Agent:

Jonathan Anapol

212-268-8289 - direct | 917-439-4225 - cell | janapol@pmrny.com

11 West 20th Street, 4th Floor, New York, NY 10011 | Tel. 212-268-8043 Fax 212-268-5742

www.NewYorkOffices.com