

Prime Manhattan Realty

Every Building, Every Space

As Exclusive Agent of Sublease

Description

Location: 800 Fifth Avenue

Size: Approx. 2200 sq. ft. available

Floor: 2nd Floor - Suite 206

Price: Negotiable

Term: Through April 15th 2014

Increases: 3%

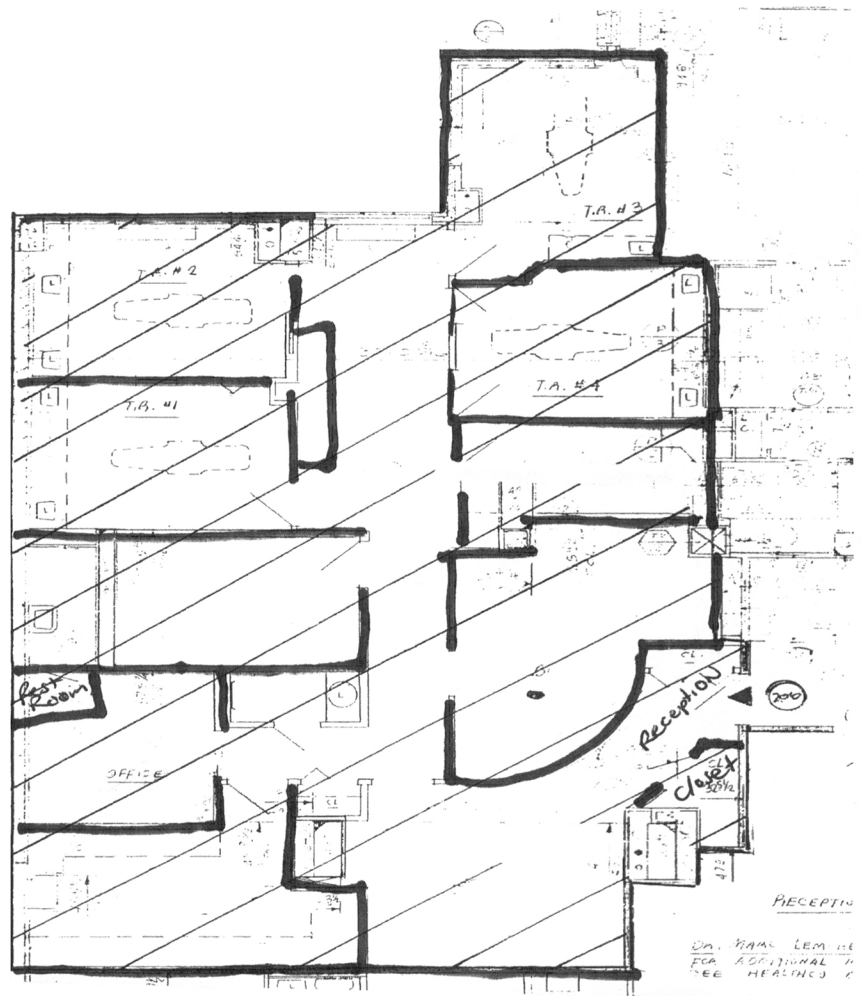
Possession: Negotiable

Electric: Direct to Con Ed



Features

- ▶ New York City's Premiere Doctor's Building
- ▶ Excellent move-in condition office
- ▶ Well appointed pantry & private bathrooms
- ▶ 8 Separate Private Rooms
- ▶ Manhattan's most prestigious block



For Further Information, Please Contact

Scott Bennett

Senior Managing Director
Prime Manhattan Realty
212-244-2784 - direct
www.PrimeManhattan.com